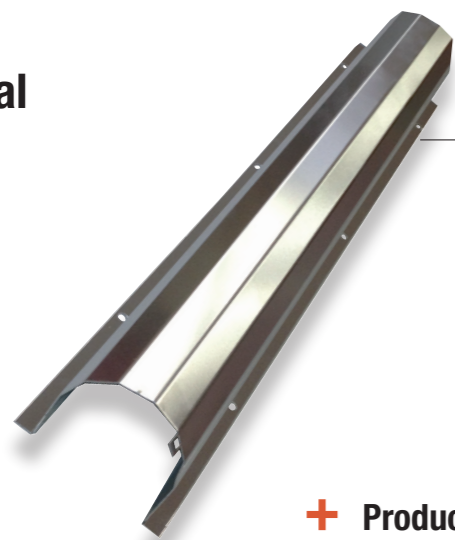


## Protective duct

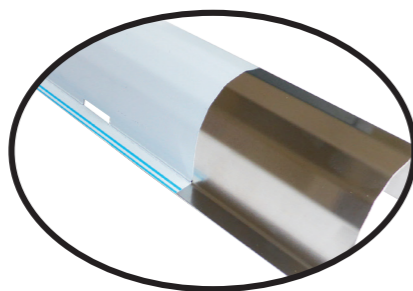
### Metal



#### Application

This protective duct is designed to protect aerial-subsurface connections on poles or façades. It is fixed on pole using straps or on facade using screws. It offers an IK10 degree of protection. It is made of metal (aluminium).

+ Product supplied with a protection film to be removed after installation



	Code	Designation	Length (m)	Weight (kg)	Sales unit
	N297	METAL PROTECTIVE DUCT GPC 35.35mm	2.75	1.100	5
	N298	METAL PROTECTIVE DUCT GPC 60.60mm	2.75	1.700	5
	N299	METAL PROTECTIVE DUCT GPC 90.90mm	2.75	2.350	1
	N300	METAL PROTECTIVE DUCT GPC 120.120mm	2.75	2.950	1

### Synthetic material



#### Application

This PVC duct is designed to protect aerial-subsurface connections on poles or façades. It is fixed on pole using straps or on façade using screws.

	Code	Désignation	Use	Length (m)	Weight (kg)	Sales unit
	N273	PROTECTIVE DUCT GPT 30.30 GREY	Earth wire	2.60	0.550	10
	N274	PROTECTIVE DUCT GPC 35.35 GREY	LV 4x50 maxi	2.75	1.010	10
	N275	PROTECTIVE DUCT GPC 60.60 GREY	LV 3x240 + 95 maxi	2.75	1.960	10
	N276	PROTECTIVE DUCT GPC 90.90 GREY	MV 3x150 + 50 maxi	2.75	2.780	5
	N277	PROTECTIVE DUCT GPC 120.120 GREY	MV 3x150 + 50 maxi	2.75	4.260	5
	N278	PROTECTIVE DUCT GPC 140.50 GREY	MV 3x240 maxi	2.75	3.060	5

Other ducts are available, in color or in aluminium. Please enquire.